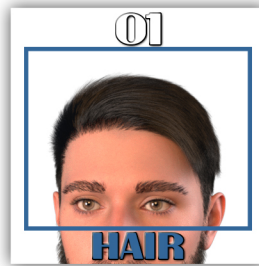
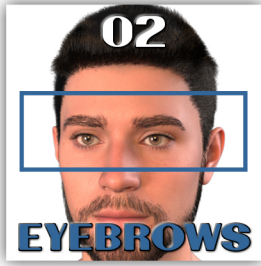


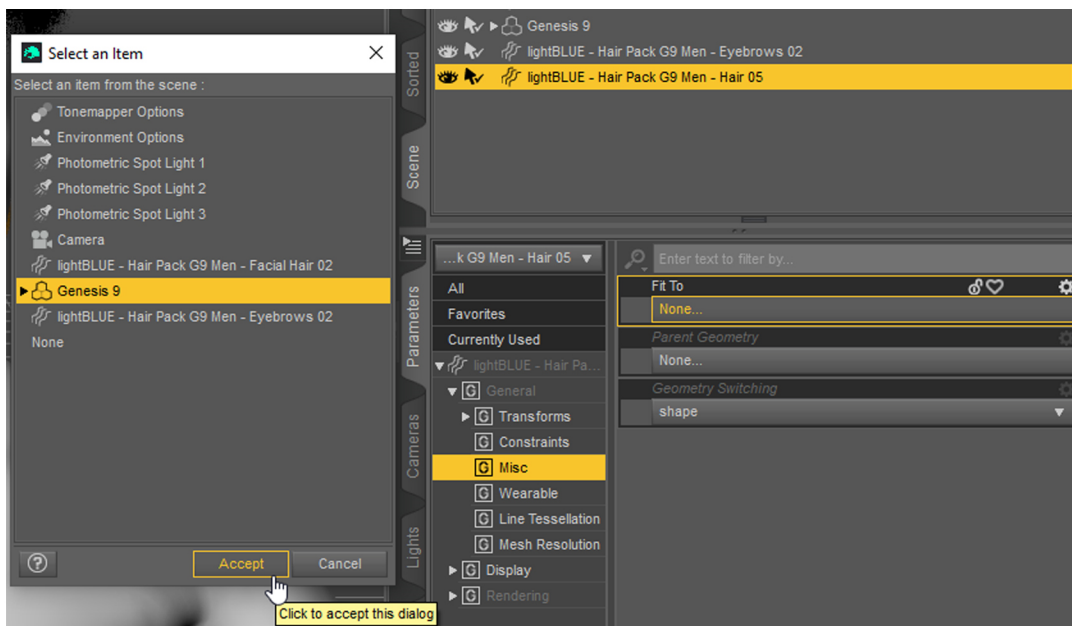
INSTRUCTIONS

- Load the hair prop of your choice and with the hair prop selected go to Parameters/General/Misc and under Fit To choose "Genesis 9". This will allow the hair to follow the figure.



This pack offers
5 eyebrow styles
5 hairstyles
and
10 facial hair styles.
Choose any combination you like.

- If the figure is not a default Genesis 9 (base male) or if it is not in the default pose, the hair might not be in the proper position when you load it, in that case, after you fit the prop to a G9 figure, go to the Parameters/General/Transforms and toggle on/off the Apply Transformation option.



Parenting is NOT needed and may cause undesired behaviour!

- In order to load materials hair prop should be selected in the "scene" pane. The same material presets are usable on all hair props from this package.



Note: The hairs look more soft and smooth after adding a subD, if this is what you'd like, when you load the hair prop select it in the scene pane/options menu/Edit/Geometry/Convert to SubD. This will give you the Mesh Resolution option in your Parameters tab, and there you will find options to increase the smoothing if you like.