

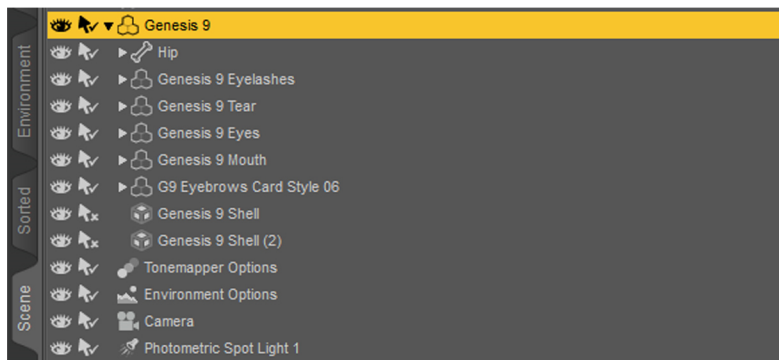
INSTRUCTIONS

- "Universal Shell Fix" is a simple solution for all shell problems in DazStudio. The script will find all shells on the selected figure, and it will fix all the "white patches" while also adjusting the matching offsets on different shells on the same figure. It can be used on any figure, with any number of shells applied. Simply select the figure and the script will find all shells and fix all shell problems.

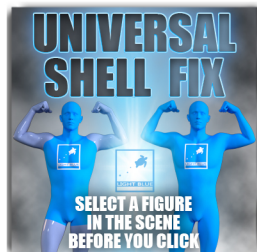
It is designed for all DazStudio users, it's very easy to use, even if you don't have too much experience!

How To Use:

- First select the figure in the scene.



- Double-click on the Universal Shell Fix icon.



- The Universal Shell Fix will fix all shell problems on that figure.

